

*** This document assumes the reader is familiar with using StenoDirectPlus to provide LocalRealtime to viewing devices via a LiveLitigation router. ***

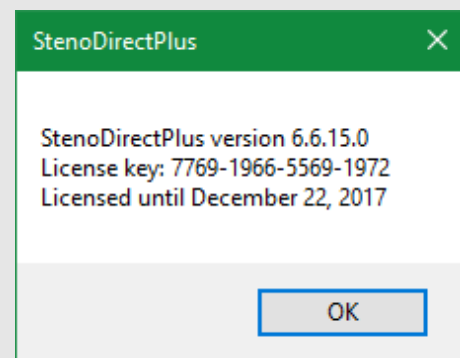
Table of Contents

Locate and Record License Key	2
Uninstall StenoDirectPlus	2
Download RealtimeConnect.	2
Install RealtimeConnect	3
Open RealtimeConnect	4
First Time Setup	4
License RealtimeConnect	4
Input Settings	5
Remote/Local	6
Realtime IP Address	6
Start a Local Event.	7
Current Activity	8
Connection Log	8
File Menu	9
Edit Menu	9
Help Menu.	10

Locate and Record License Key

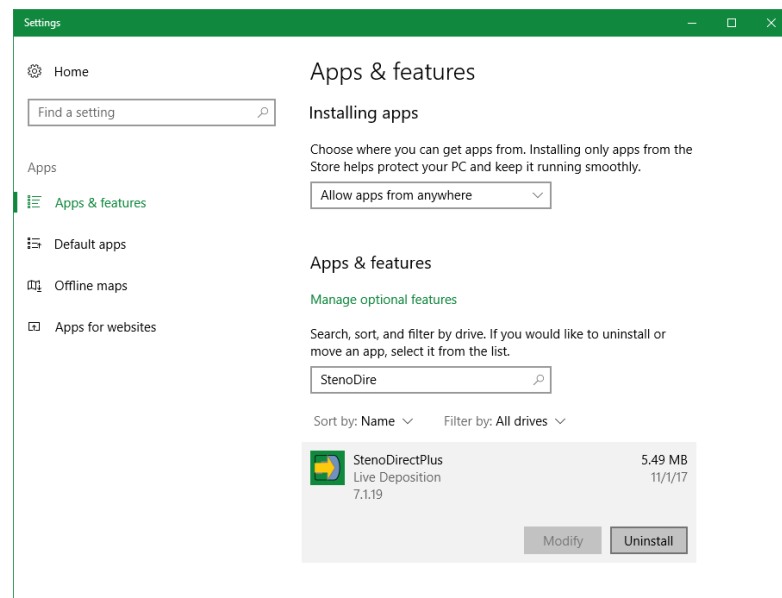
RealtimeConnect will use the same License Key as StenoDirectPlus.

- Open StenoDirectPlus.
- Click **Help > About**.
- Open a text document and record your License Key for later reference.
- Close StenoDirectPlus.



Uninstall StenoDirectPlus

- Open Apps & features.
- Select **StenoDirectPlus**.
- Click **Uninstall**.
- Reboot your PC.



Download RealtimeConnect.

Click the link below to download.

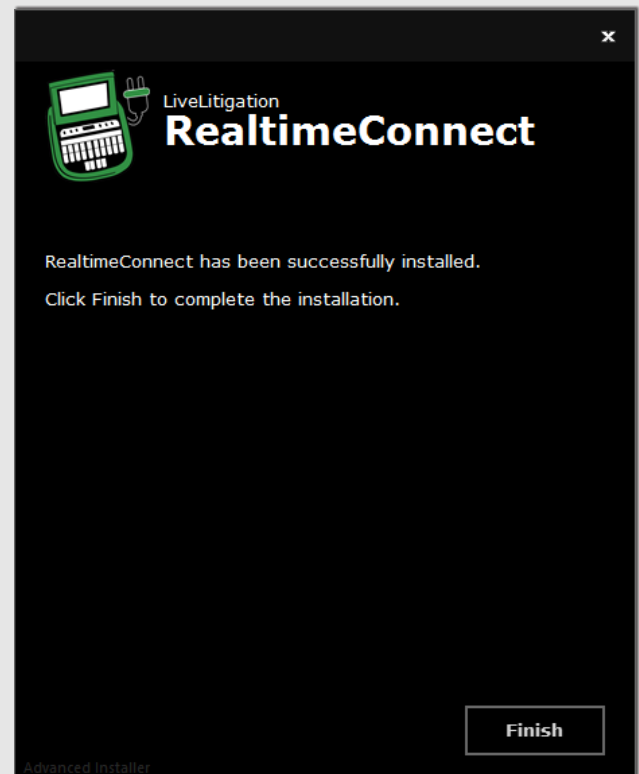
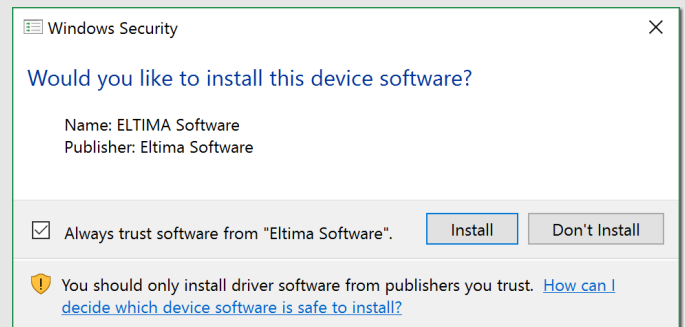
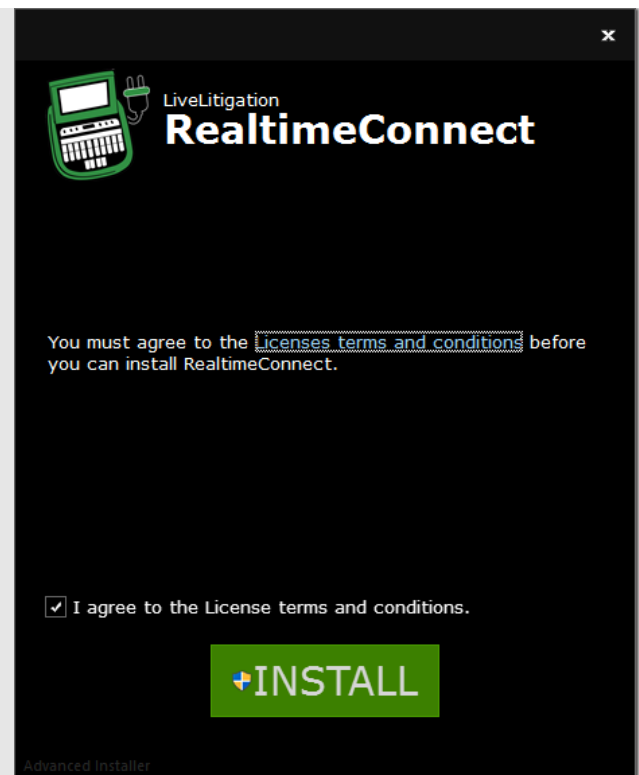
- <https://simple.livelitigation.com/utilities/RealtimeConnectSetup.exe>
- Once downloaded, run the RealtimeConnectSetup.exe file.



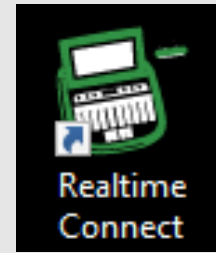
RealtimeConnectSetup.exe

Install RealtimeConnect

- Read and Accept the **License terms and conditions**.
- Click **Install**. Installation will take a few minutes.
- If you are prompted to install .NET Framework, Click **Install**.
- If you are prompted to install the "Eltima" drivers, Click **Install**.
- Click **Finish** when complete.



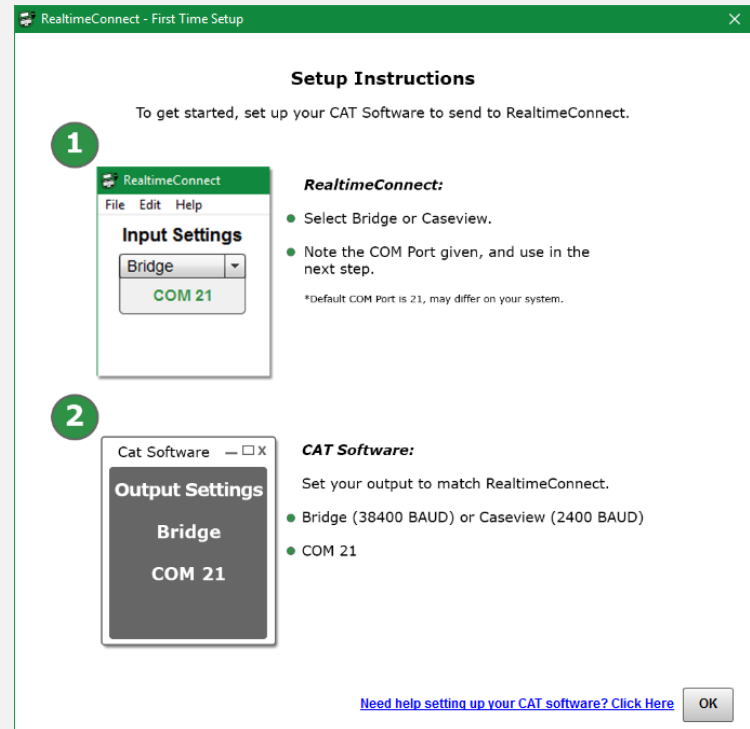
Open RealtimeConnect



First Time Setup

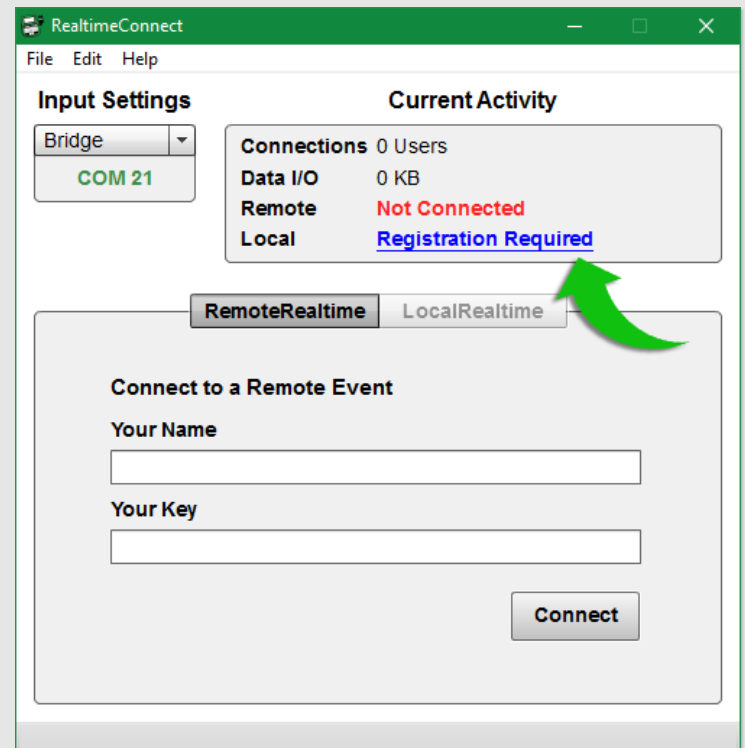
You will see the First Time Setup window as displayed here.

- No action is required if you have previously used StenoDirectPlus, and have set up an output in your CAT Software for COM 21.
- Click **OK** to dismiss the window.

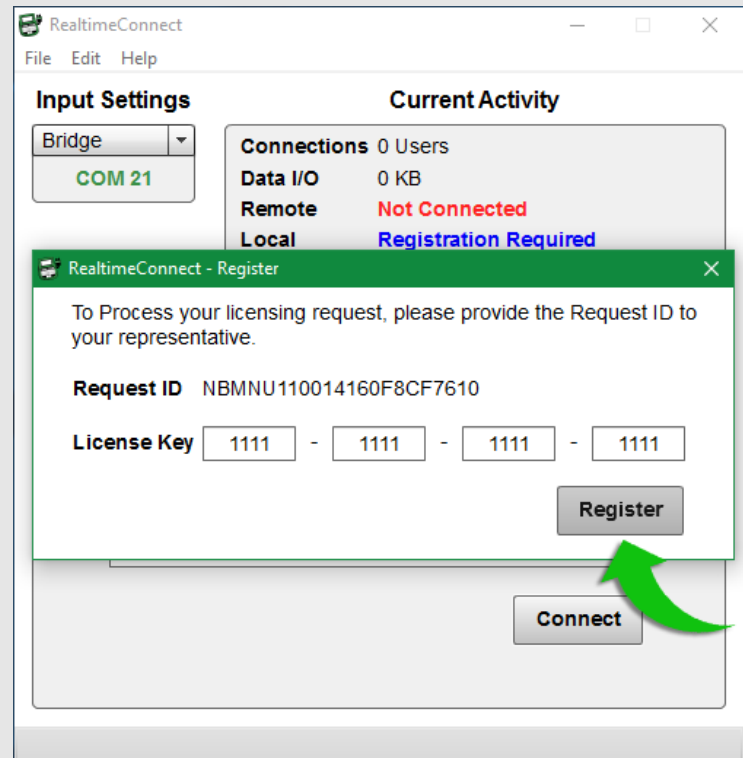


License RealtimeConnect

- Click [Registration Required](#)

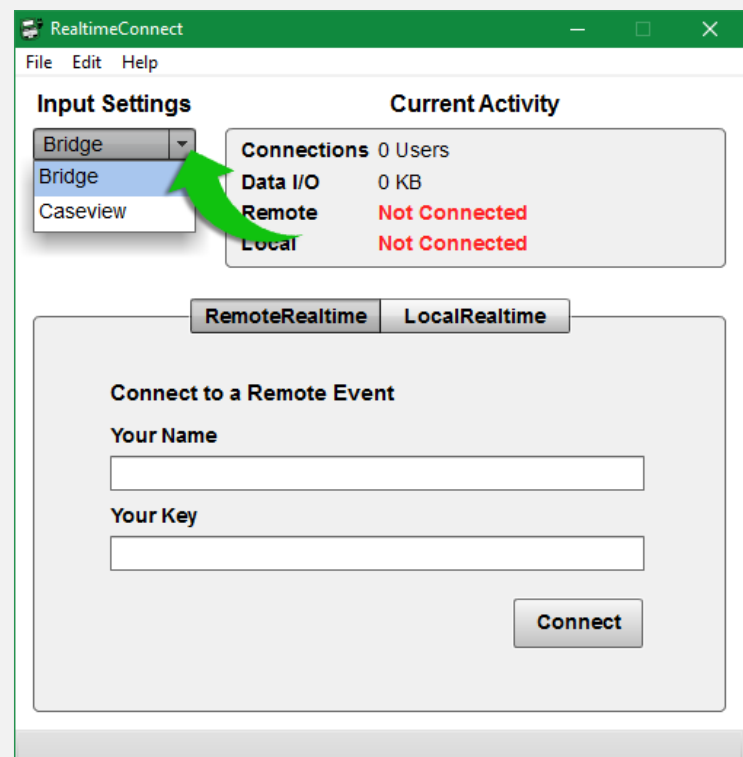


- Type or Copy-and-Paste your License Key into the fields.
- Click **Register**.



Input Settings

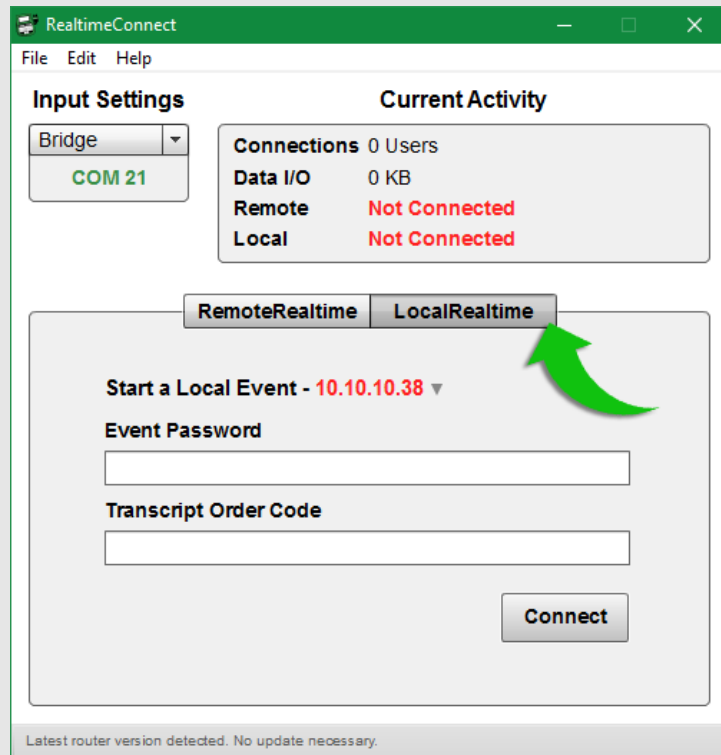
- Choose **Bridge** or **Caseview** as appropriate.
- RealtimeConnect will remember your selection for future sessions.



Remote/Local

RemoteRealtime and LocalRealtime are now separate views that can be toggled by clicking the header label.

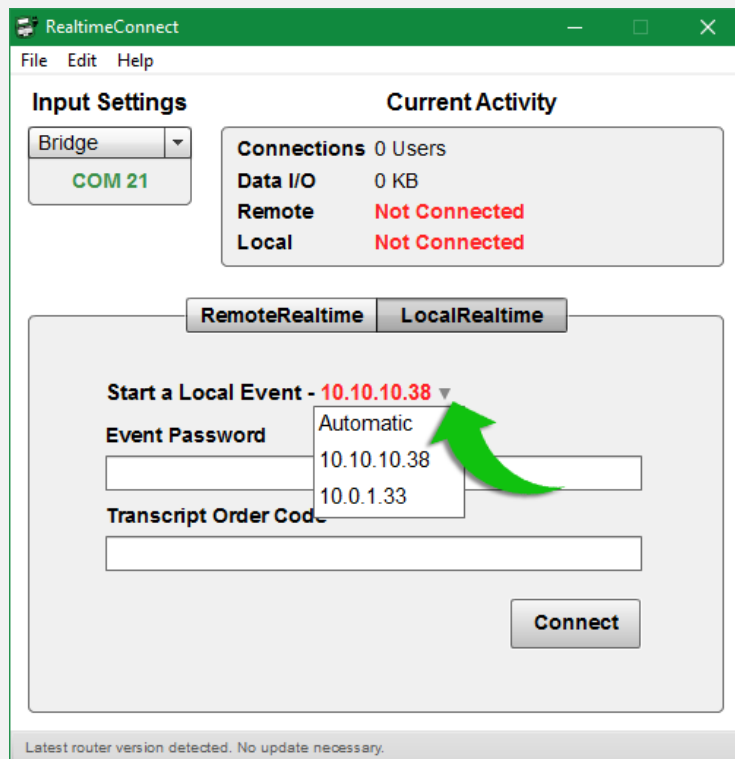
- RealtimeConnect will remember your last view, and display it on startup.



Realtime IP Address

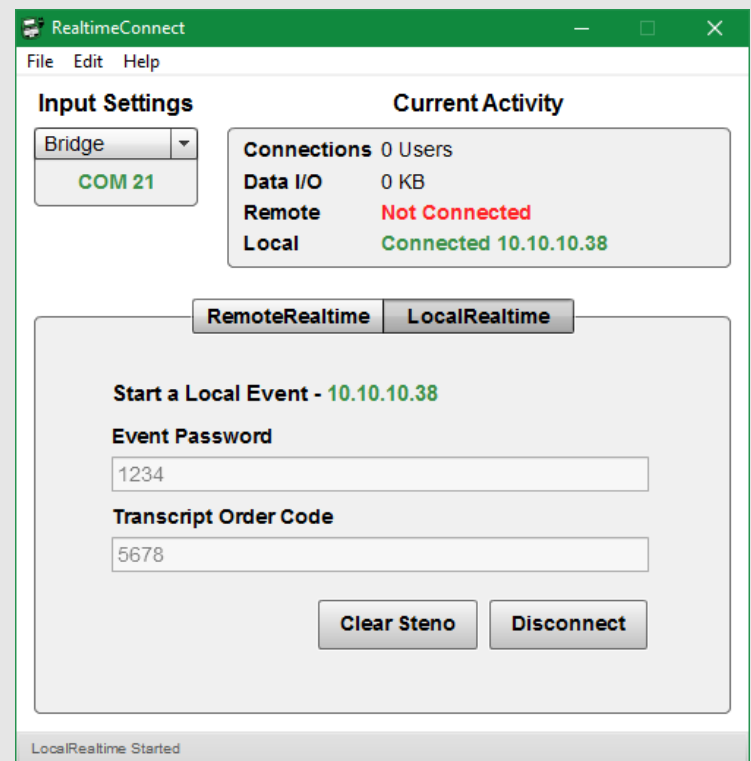
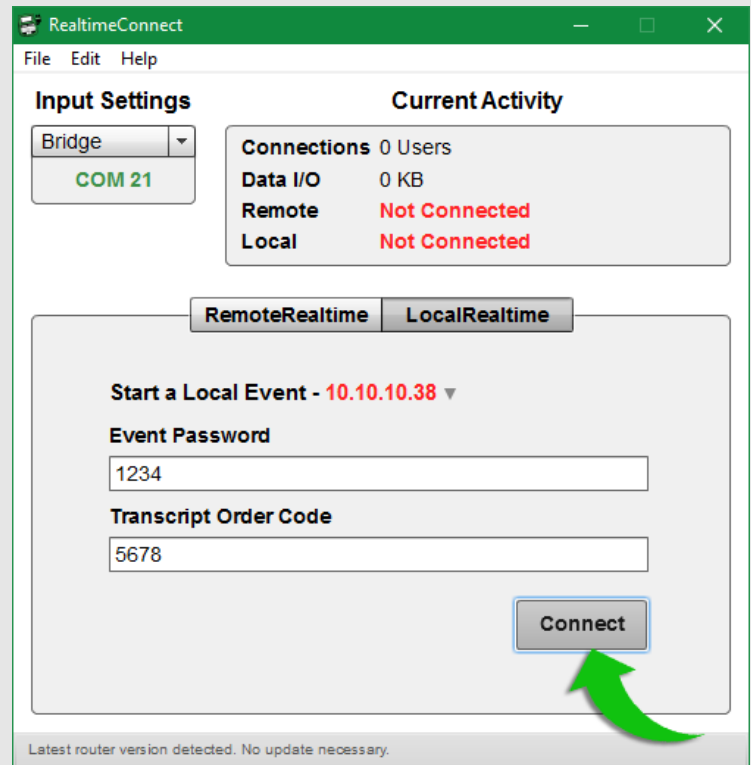
RealtimeConnect displays a dynamic list of IP addresses assigned to your computer.

- Before your LiveLitigation router is connected, you may see an IP address from your WiFi network (if connected).
- Once you connect your LiveLitigation router, the IP address will automatically update to display the "10.10.10.xx" address, as provided by the router.
- By clicking the arrow next to the IP address, you can see the IP addresses currently assigned to your computer (usually no more than 2, one WiFi, one Ethernet).
- You will also see "Automatic" which is the default mode. Automatic ensures that RealtimeConnect will always prefer the "10.10.10.xx" address when it becomes available.



Start a Local Event

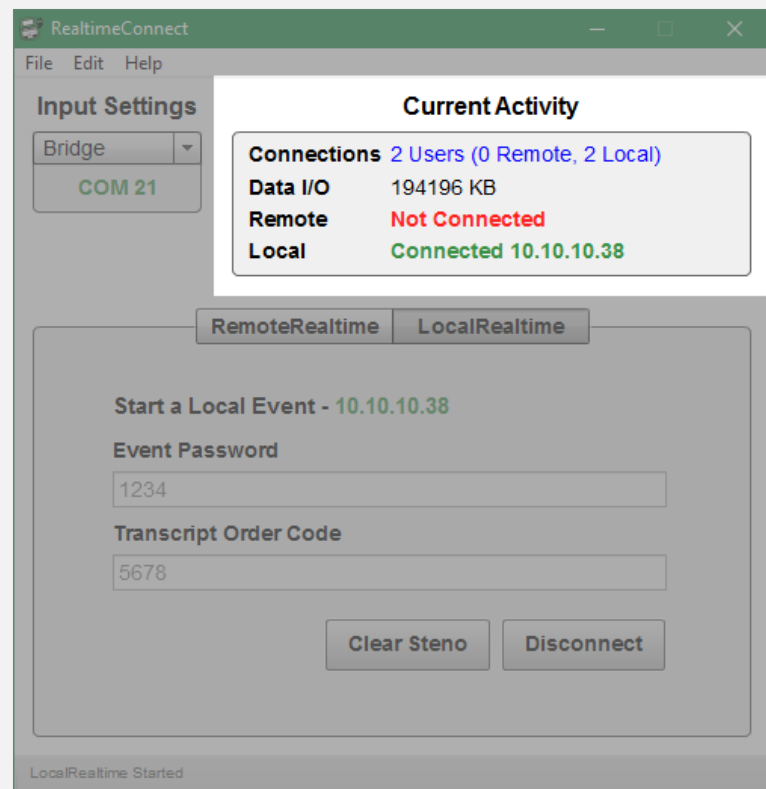
- Enter a **Password**.
- Enter a **Transcript Order Code**.
- Click **Connect**.
- **NOTE:** RealtimeConnect will remember your given Password and Transcript Order Code to speed up starting future sessions. You can always change these if desired before starting a new session.



Current Activity

RealtimeConnect has a new section labeled "Current Activity" that displays information about the current session.

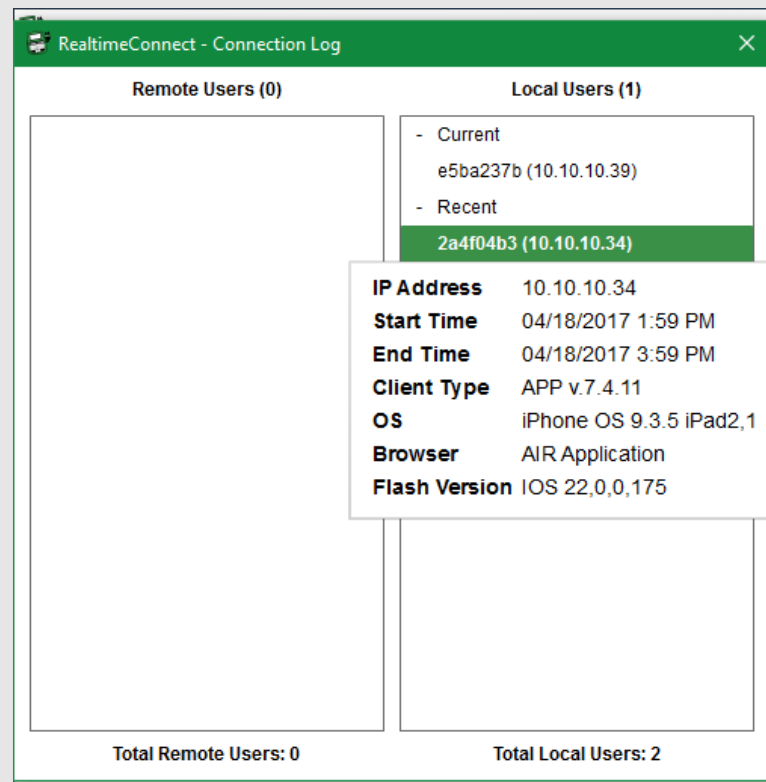
- **Connections** displays the number of viewing devices currently connected to your sessions (Remote and Local).
- **Data I/O** indicates the flow of data from your CAT Software to RealtimeConnect in Kilobytes.
- **Remote** and **Local** sessions are shown as **Connected** or **Not Connected**.



Connection Log

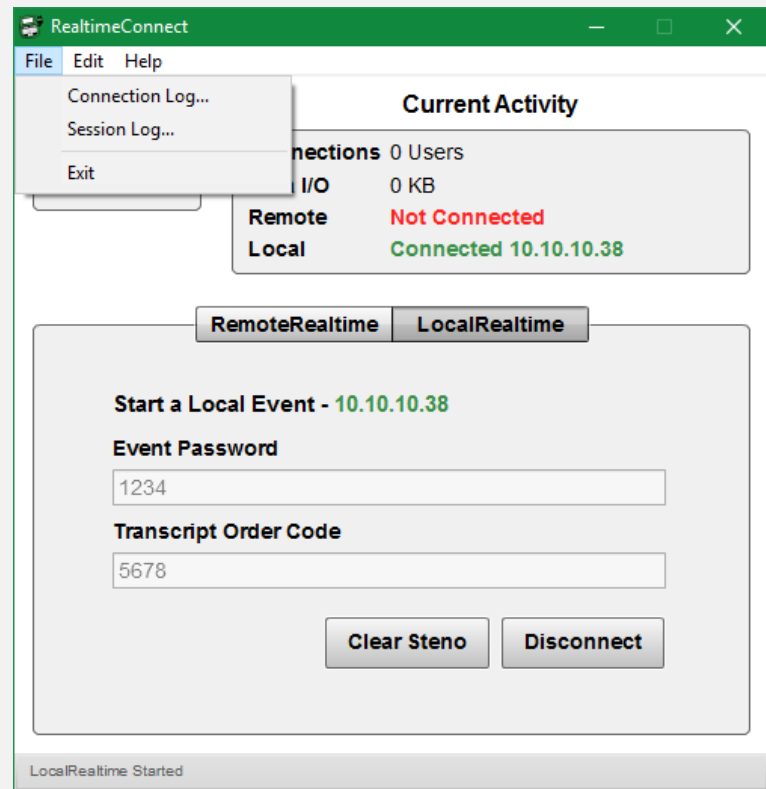
By clicking on the Connections label, RealtimeConnect will display a list of Viewing Device connections from the current session.

- Devices that are currently connected will be displayed under **Current**.
- Devices that have disconnected will be displayed under **Recent**.
- If a device disconnects and reconnects during the session, it is moved from Recent back to Current.
- Clicking on an individual user will display all of the available information about the device, including device type, operating system, and start/end times.
- A cumulative total is displayed at the bottom: total unique devices that have connected over the course of the current session.



File Menu

- **Connection Log** displays the detailed list of User/Device connections.
- **Session Log** stores information about the current application session, may be used for troubleshooting.
- **Exit** closes the application.

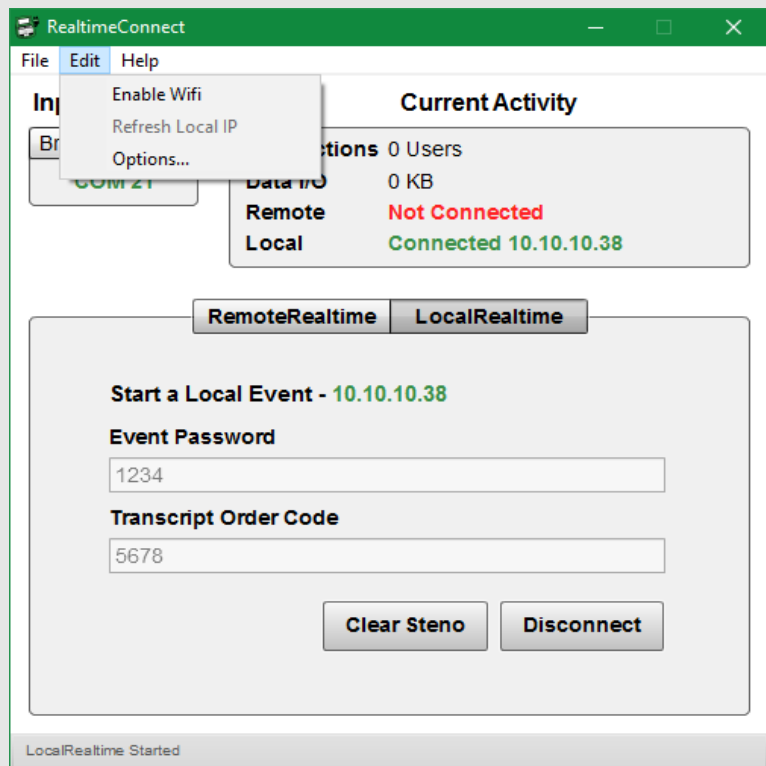


Edit Menu

- **Enable WiFi** allows you to use WiFi for Internet access while using the LAN (Ethernet) for the LiveLitigation router. This can only be enabled when both WiFi & LAN connections are present.

Best Practice Tip: Connect WiFi to Internet, and Ethernet to LiveLitigation router before opening RealtimeConnect, and 'Enable WiFi' will engage automatically.

- **Refresh Local IP** if the LiveLitigation router is connected, but the IP address does not appear, click Edit > Refresh Local IP, to ensure you are looking at an up-to-date list.
- **Options** contains the default settings for RealtimeConnect.



Help Menu

- **Register** displays the Request ID, License Key, and License Expiration date. The "Validate" button can be used to fetch any changes made to the license remotely (Internet access required).
- **Documents** opens a link to the setup guides on wiki.livelitigation.com (Internet access required).
- **First Time Setup** displays the instructional window for setting up CAT Software.
- **COM Ports** displays the Eltima Virtual Serial Ports that are in use by RealtimeConnect. A pair of ports are used to complete the connection (COM 21 and 22).
- **Update Local Router** checks the LiveLitigation router for its current version and updates it if a newer version of the software exists. NOTE: this check/update is performed automatically every time the LiveLitigation router is connected to RealtimeConnect.
- **About** displays the current version of RealtimeConnect, License Key, and License Expiration date.

